

### 3. Violin Parrot

Joachim Johow  
12.1.2015

**Vivace**  $\text{♩} = 100$

Violine 1  
Violine 2  
Violine 3  
Kontrabass  
Klavier

*pizz*

7

VI. 1  
VI. 2  
VI. 3  
Kb.  
Klav.

13

VI. 1  
VI. 2  
VI. 3  
Kb.  
Klav.

*f*  
*f*

19

VI. 1

VI. 2

VI. 3

Kb.

Klav.

25

VI. 1

VI. 2

VI. 3

Kb.

Klav.

31

1.

2.

*f*

*f*

*f*

Kb.

Klav.

*8va*

37

VI. 1

VI. 2

VI. 3

Kb.

Klav.

43

VI. 1

VI. 2

VI. 3

Kb.

Klav.

48

VI. 1

VI. 2

VI. 3

Kb.

Klav.

Fine

55

VI. 1

VI. 2

VI. 3

Kb.

Klav.

61

VI. 1

VI. 2

VI. 3

Kb.

Klav.

66

D.S. al Fine

VI. 1

VI. 2

VI. 3

Kb.

Klav.

tr

### 3. Violin Parrot

Vivace  $\text{♩} = 100$



6

11

16 *f*

21

27

33 *f*

38 *p*

43 *mp* *mf*

48 *f* 1. 2. Fine

54 1.

60 2.

66 1. 2. D.S. al Fine

## 3. Violin Parrot

Joachim Johow  
12.1.2015Vivace  $\text{♩} = 100$ 

6

11

16 *f*

21

27

33 1. 2. *f*

38 *p*

43 *mp* *mf*

48 1. 2. *f* **Fine**

54 1.

60 2.

66 1. 2. **D.S. al Fine**

### 3. Violin Parrot

Joachim Johow  
12.1.2015

Vivace ♩=100

6

11

16

21

26

31

36

41

48

54

60

66

*p* *mp* *mf* *f*

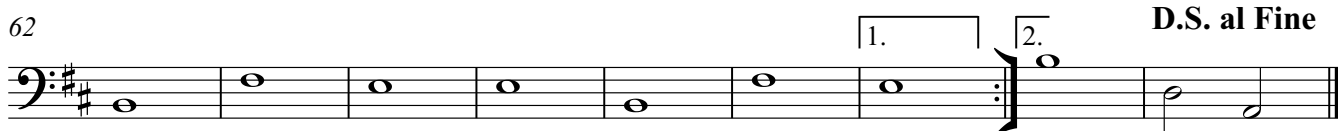
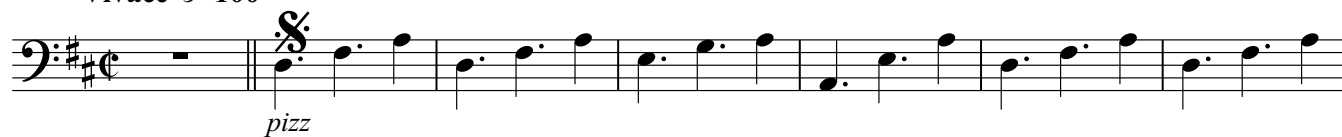
1. 2. *f*

1. 2. *f* Fine

1. 2.

D.S. al Fine

## 3. Violin Parrot

Joachim Johow  
12.1.2015Vivace  $\text{♩} = 100$ 



# 3. Violin Parrot

Joachim Johow  
12.1.2015

Vivace  $\text{♩} = 100$

Measures 1-6 of the piece. The music is in 2/4 time with a key signature of two sharps (F# and C#). The tempo is marked 'Vivace' with a quarter note equal to 100 beats per minute. The piece begins with a treble clef and a common time signature, which changes to 2/4 at the start of the first measure. The melody is primarily in the treble clef, while the bass clef provides a steady accompaniment.

Measures 7-11. The melody continues in the treble clef, featuring eighth and sixteenth notes. The bass clef accompaniment consists of quarter and eighth notes. A fermata is placed over the final note of measure 11.

Measures 12-15. The melody in the treble clef becomes more active with sixteenth-note patterns. The bass clef accompaniment continues with a steady eighth-note rhythm.

Measures 16-20. This section includes a first ending bracket. The melody in the treble clef features a series of eighth notes leading into a repeat. The bass clef accompaniment remains consistent.

Measures 21-25. The melody in the treble clef continues with eighth-note patterns. The bass clef accompaniment provides a steady accompaniment.

Measures 26-30. The melody in the treble clef continues with eighth-note patterns. The bass clef accompaniment provides a steady accompaniment.

Measures 31-35. This section includes a first ending bracket and a second ending bracket. The melody in the treble clef features a series of eighth notes leading into a repeat. The bass clef accompaniment remains consistent. The piece ends with a fermata over the final note of measure 35.

36 (8)

41 (8)

46

51 2. Fine

57

62

66